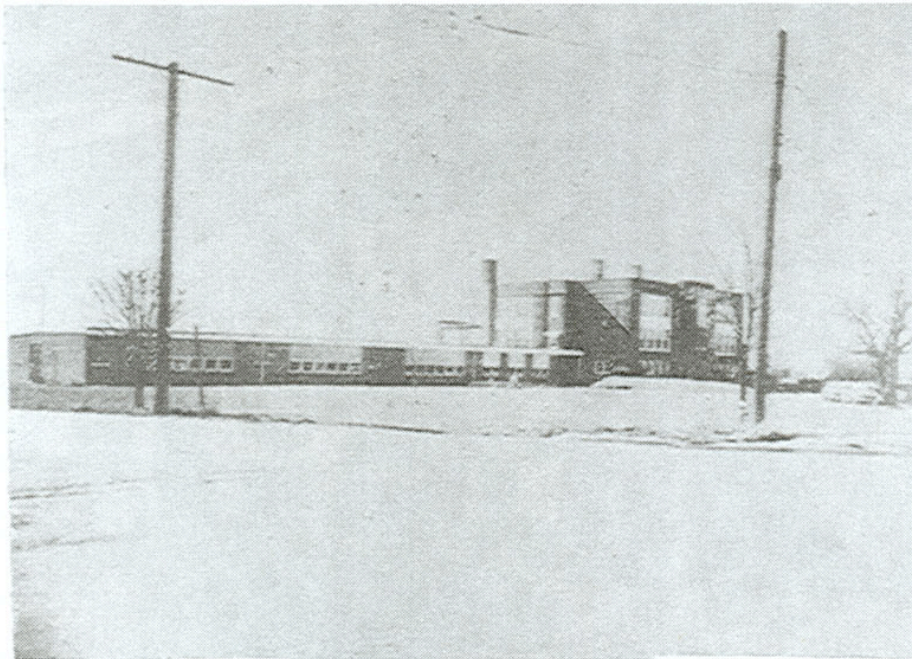


The article below was part of a souvenir program of the Hilliards Centennial in 1953.

SCHOOLS

Author Unknown

The first school in the township was opened in a log cabin at Smiley's Corner in 1814. As settlements developed over the township, one room schools were built in locations convenient to the children. A special village district was organized in Hilliards in 1870. The first high school class, consisting of Emma Harrington and Frank Elzey, was graduated in 1888. In 1905 the southeast part of Norwich Township school district was set off as Norwich Special School District. During this year the first section of the present high school building was planned and was completed in 1906. Beginning with the 1915-16 school year residents of the western part of Washington Township petitioned the County Board of Education and that territory became a part of the Norwich Township School District. In 1916 the district consolidated and a bond issue was approved for the eleven room elementary school at Hilliard. No further buildings were erected until 1930, when the auditorium was added to the high school. The addition containing the music room, commercial department and vocational agriculture rooms was built in 1939. The last building program was in 1949 when seven classrooms were added to the elementary school, dressing and shower rooms to the high school, the nine section bus garage was erected and more than 12 acres of land was acquired on the east side of the high school grounds. The stadium was paid for and built by the Hilliards High School Boosters in the summer of 1951. During the sixty-five years the high school has existed, a total of 1,752 persons have been graduated.



Hilliards Elementary School

HILLIARDS ELEMENTARY SCHOOL